

Sample tufting machine

“BENKEI”

The Fastest and most Flexible Sample Tufting Machine
In the world operating with Multiple needles up to
12 needles with variety of colors up to 8 colors

By Yamaguchi Japan

Patent Pending



Why did we start development of “BENKEI” ?

Until now, samples had to be produced by small width tufting machine but this required too much cost and work time to convert certain gauge to another.

“BENKEI” can produce full variety of carpets by only replacing max. 12 sets of gauge parts.



YAMAGUCHI SANGYO CO., LTD.

Address : 1-20-10 TAMATSUKURI CHUO-KU OSAKA 540-0004 JAPAN

TEL : 06-6768-0800

FAX : 06-6768-0750

E-MAIL : yamaguchi@yamatech.jp

NAKAGAWA MFG. CO., LTD.

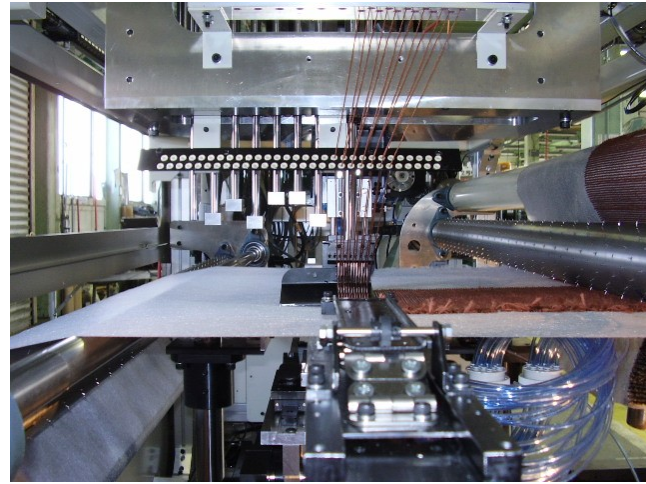
Address : ANOH TSU MIE PREF 514-2359 JAPAN

TEL : 059-268-2325

FAX : 059-268-0907

E-MAIL : sales1@nks-j.com

We are
An ISO 14001, 9001
Certified Company

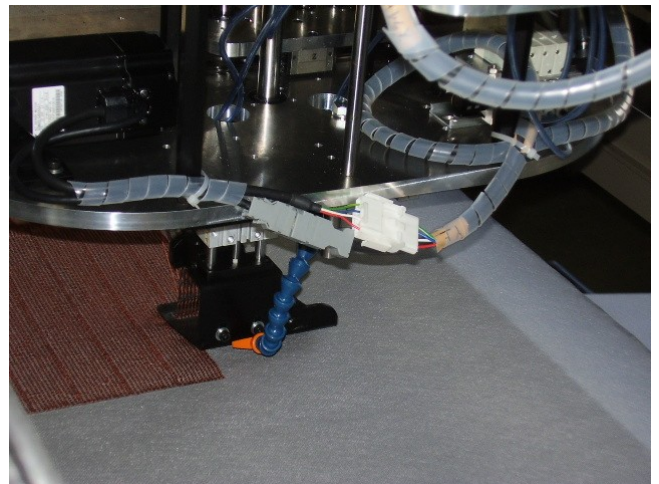


"Side View of BENKEI"

Needle Head with Yarn Feed Attachment Driver by Stepping Motor and Cut/Loop Mechanism are synchronized. Needle shifter (sliding) mechanism are includes in needle head.

"Air Blow System"

When Needle Head and Cut/Loop Mechanism returns to starting point after tufting, This Air blow System helps to prevent the entanglement And unthreading of yarns.



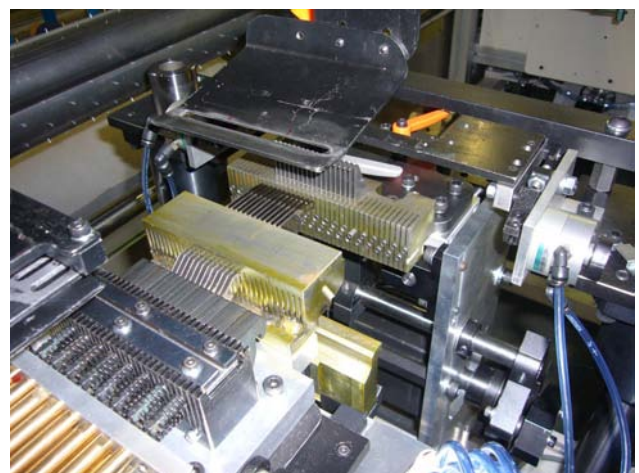
"Stepping Motor Driven Yarn Feed"

Yarn feedings are done by Gear Feeder instead of general rollers in order to obtain high accuracy feeding.

"Mechanism of Cut/Loop & Loop"

By using the same parts with actual production machine, "BENKEI" can produce the sample in exactly the same quality.

You can easily replace gauge parts to change to different carpet style.



"Samples produced by BENKEI"



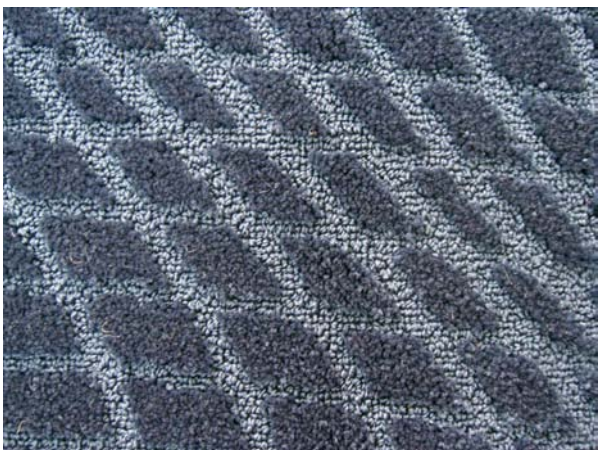
1/8" + 1/4" GG. Multi Loop Carpet Sample



1/8" GG. Cut/Loop Carpet Sample



1/8" GG. Multi Loop Carpet Sample



1/10" GG. Cut/Loop Carpet Sample



1/10" GG. Multi Loop Carpet Sample





SPECIFICATION for "BENKEI"

1.3m wide Sample Tufting Machine "BENKEI" (BK-130)

Dimension :

3090 wide × 1110 deep × 1620 high (without creel) / 700kg

2.3m wide Sample Tufting Machine "BENKEI" (BK-230)

Dimension :

4000 wide × 1110 deep × 1620 high (without creel) / 850kg

Product :

Loop Pile : 5/32" GG. , 1/8" GG. , 1/10" GG. , 1/12" GG.(1/8" + 1/4") , etc...

Cut Pile : 5/32" GG. , 1/8" GG. , 1/10" GG. , etc...

Cut & Multi Loop : 5/32" GG. , 1/8" GG. , 1/10" GG. , etc...

Other gauge available upon request.

Mechanical Data :

Working Width : Max. 2300mm

Speed : Straight ... Max. 800RPM / Shifted ... Max. 600RPM

Number of Needles : 12 Needles or 1 needle

Yarn Feed : Stepping Motor 18 sets

Base Cloth Feeding : By Servo Motor

Pile Height :

1/10" GG. Loop Pile : Min. 2.5mm ~ Max. 10mm

Cut Pile : Min. 5mm ~ Max. 17mm

1/8" GG. Loop Pile : Min. 2.5mm ~ Max. 15mm

Cut Pile : Min. 5mm ~ Max. 21mm

5/32" GG. Loop Pile : Min. 2.5mm ~ Max. 15mm

Cut Pile : Min. 6mm ~ Max. 25mm

1/12" GG. Loop Pile : Min. 2.5mm ~ Max. 12mm

Artificial Grass : Max. 85mm

Sliding Needle Bar :

Single Needle Sliding

Double Needle Sliding

No of Colors :

Max. 8 colors

Power Requirements :

200/220 volts AC 50/60Hz 8Kw 25A

Design Format :

BMP Format

Air Supply Requirements :

160 lit/min , 0.69Mpa

Application :

Carpet Sample

Yarn Trial

Design Sample

Etc...

